



DJI Matrice 4t

Worry-free plus combo



Intelligent Operation Functions



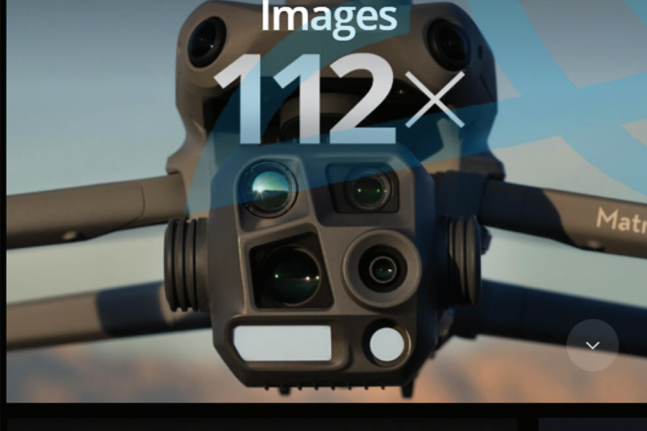
Excels in Low-Light Environments

0.5lux

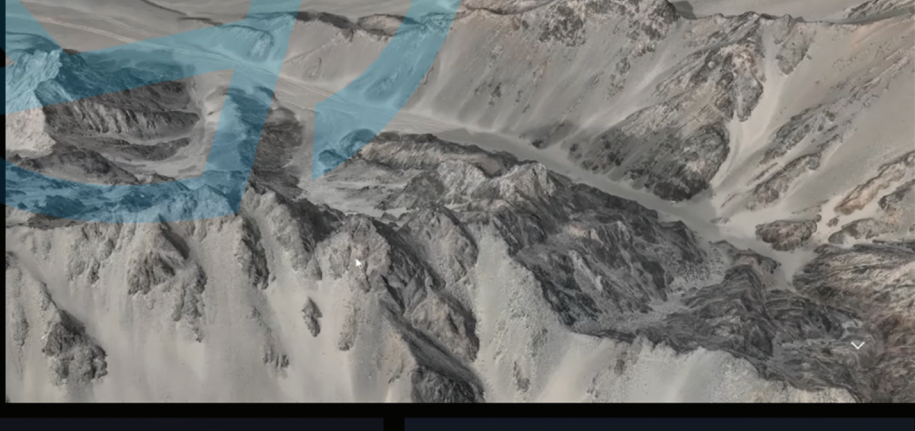


Clear Vision and Stable Images

112x



High-Efficiency Precision Mapping



Comprehensive Accessory Upgrades



Enhanced Flight Safety



DJI Care Enterprise

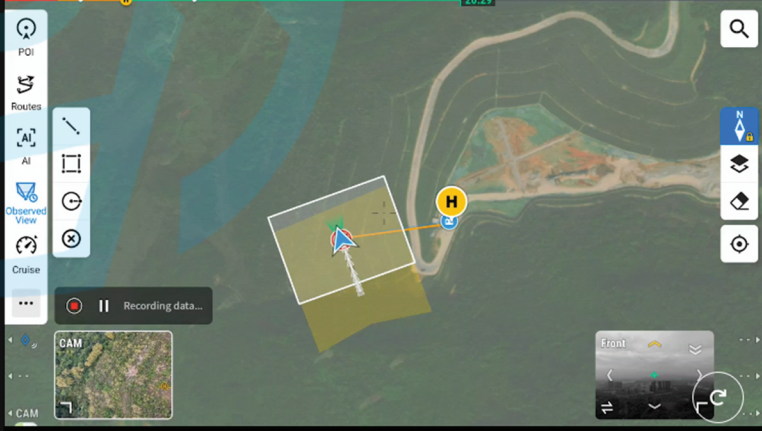


Laser Range Finder, Precise Measurement

The laser range finder enables real-time precise measurement. Through simple operations such as pin point, line drawing, and area calculation, it can complete tasks like marking target locations for inspection purposes or calculating the area of a wildfire. Additionally, users can share info via the DJI Pilot QR code or FlightHub 2 with relevant personnel to enhance collaboration and workflow efficiency.

Observation Range Recording

DJI Pilot 2 can highlight the center position of the camera frame and ground area observed. It can display the surveyed area on the map, making it especially useful for patrols, and rescue operations in mountainous terrain without clear landmarks.



Enhanced Medium Telephoto

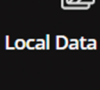
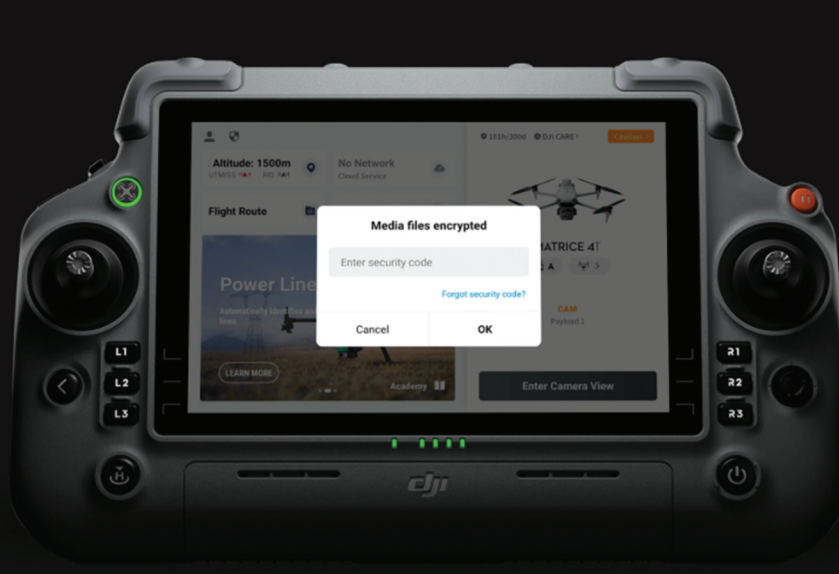
The Matrice 4 series is equipped with a medium tele camera, expanding its capabilities for medium-range inspection tasks. During power line or bridge inspections, it can detect screws and cracks from a distance of 10 meters and clearly read instrument data at substations. [6]



Super Resolution Telephoto

The tele camera of the Matrice 4 series has significantly improved clarity, featuring 48 MP resolution, capable of capturing incredibly details from signs up to 250 meters away. [7] Additionally, the Matrice 4T is equipped with an IR-Cut Filter, ensuring 24/7 operations.

User Data Security



Local Data Mode



One-Tap Clear All Device Data



AES-256 Video Transmission Encryption



Cloud API

Get 1 Year of DJI Care Enterprise Plus or 1 Year of Official Extended Warranty Service for Free [23]

DJI Care Enterprise Plus [24]

Comprehensive Protection | Professional Assurance | Exclusive Service | Service Starts with Activation



Free Repairs

Unlimited number of free repairs within the coverage limit.



Flyaway Coverage

1 time/year, worry-free operation



Coverage for Your Whole Fleet

Shared limit for maximum protection



Free Shipping

Free Mail-in Repairs, Hassle-Free Service

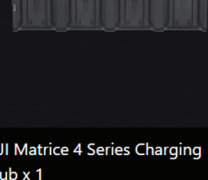
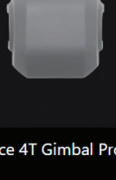
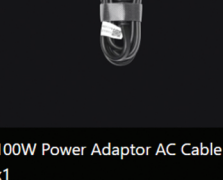
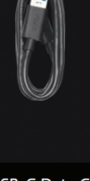
Extended Warranty Service

During the service period, the main parts [25] remain covered by the official warranty, bringing longer protection for your product.

IN THE BOX



Shoulder Strap x1



DJI 100W USB-C Power Adapter x1

- Takeoff weight- 1219 g
- Takeoff Weight (with Low-Noise propellers)- 1229 g
- Max Takeoff Weight- Standard Propellers: 1420 g, Low-Noise Propellers: 1430 g
- Max Payload- 200 g
- Propeller Size- 10.8 in
- Diagonal Wheelbase- 438.8 mm
- Max Ascent Speed- 10 m/s
- Maximum Ascent Speed With Accessories- 6 m/s
- Max Descent Speed- 8 m/s
- Max Descent Speed With Accessories- 6 m/s
- Max Altitude- 6000 m
- Max Operating Altitude with Payload- 4000 m



Drones | Robots | RC Cars | VR | Gadgets

Bengaluru (Head Office), Hyderabad, Kolkata, Mumbai, Pune.

everse.in

9429691484

